



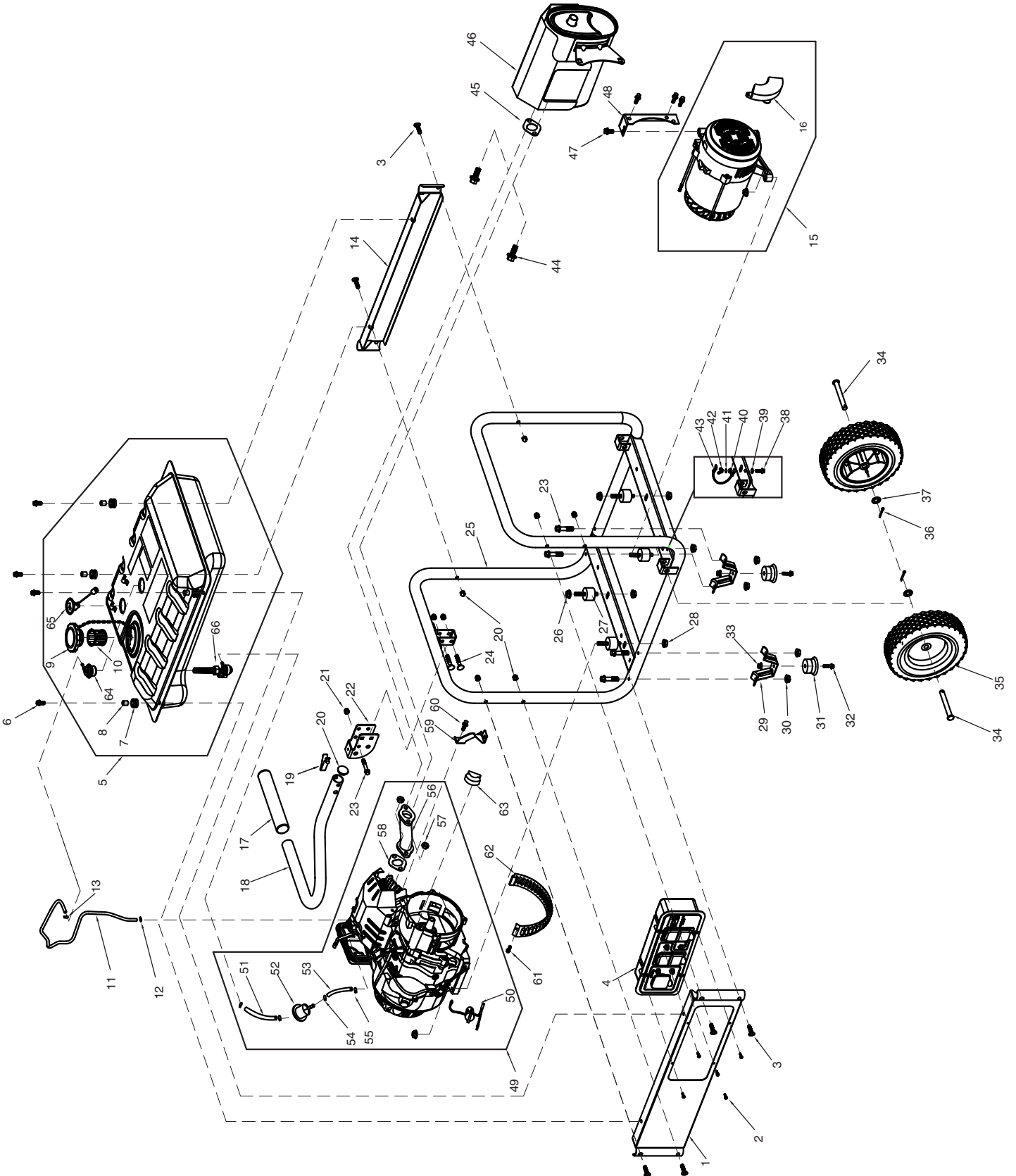
Parts Manual

GP5500kW 389CC (Model 0059396)

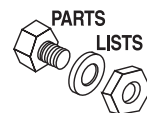
First unit begins with serial number 7026058A

NOTICE!

The information in this manual is known to be accurate as of the date of release shown on the cover. However, engineering changes can occur without notice. To obtain the proper parts, please be sure to use the serial number of the unit being serviced when ordering from this manual. Always refer to any parts notes and changes before ordering. All other parts not shown in this manual can be found on Generac's exploded view drawings online on GENservice at www.generac.com.



GP5500



Item	Part #	Qty	Description
1	0H97480ST03	1	FRAME RAIL PAINT: BLACK
2	0G8382	8	SCREW PPPH #8-16 X .66" BZC
3	0H1780	6	CURVED HEAD M8-1.25 X 41MM LNG
4	0H9775D	1	CONTROL PANEL ASSY.
5	0H7510A0SRV	1	FUEL TANK ASSY. 7 GAL
6	0E9507C	4	SCREW HHFC M8-1.25 X 20 W/M10
7	0H1411B	4	RUBBER MOUNT,10.3 ID X 11 HGT
8	0H1610A	4	ANTI-CRUSH 10.8OD 9ID 10LG
9	0H0958	1	FUEL CAP
10	0H1326	1	FUEL FILTER
11	0K0091	1	HOSE FORMED ROV-AIRBOX GP EPA
12	0J35220173	1	LOOP, TUBE (CLAMP)
13	0J35220174	1	LOOP, TUBE (CLAMP)
14	0H9749AST03	1	BACK RAIL PAINT: BLACK
15	0J8363	1	ALTERNATOR ASSY. 5.5kW
16	0H2579B	1	AVR
17	0G8442C113	1	HANDLE GRIP
18	0H97560ST15	1	HANDLE
19	0G5442	1	SNAP BUTTON - .437" DIA. HEAD
20	0H9760	1	PLUG
21	0H1782	9	CAP NUT LOCKING M8
22	0H97670ST15	1	BRACKET
23	0B1214	5	BOLT M8X45
24	0H1781	2	CARRIAGE HEAD BOLT M8X46
25	0H97620ST15	1	ASSEMBLY FRAME GP5-6.5KW PS
26	0G84420107	4	NUT M10
27	0H1783	4	VIB MOUNT RUBBER
28	067989	4	NUT M8
29	0K0097	2	FRAME, BENT FOOT
30	0K0098	4	NUT M8
31	0K0099	2	RUBBER FOOT

Item	Part #	Qty	Description
32	0K0100	2	BOLT M6X28
33	0K0105	2	NUT M6
34	0H0204	2	AXLE PIN
35	0K6011	2	WHEEL COMP
36	0D4999	2	COTTER PIN
37	022304	2	WASHER FLAT Ø13X2
38	0J35220156	1	BOLT M6X20
39	0K0093	1	WASHER LOCK SPECIAL
40	0G84420272	1	NUT M6
41	0J47870118	1	WASHER FLAT Ø6X0.8
42	0K0094	1	NUT M6
43	0K0092	1	ASSY GND WIRE
44	0E9507C	2	BOLT M8X25
45	0J4691	1	GASKET, EXAUST, MUFFLER
46	0J8672	1	MUFFLER
47	0E9470	4	BOLT M8X16
48	0G8542	1	BRACKET, MUFFLER
49	0G8442C	1	ENGINE 390FA
50	0G9911	1	ENGINE SWITCH
51	0G9757A	1	FUEL HOSE Ø8X55
52	0G9914	1	FUEL FILTER
53	0G9757B	1	FUEL HOSE Ø8X80
54	0G84420259	3	CLAMP HOSE Ø8
55	0J00620118	1	CLAMP HOSE Ø9.5
56	0J4535A	1	MANIFOLD EXHAUST GP5-7.5E
57	0J35220161	2	NUT M8
58	0G9028	1	GASKET, EXAUST,CYLINDER
59	0G8442C112	1	BRACKET, AIR CLEANER
60	0G84420194	3	BOLT M6X12
61	0J00620100	1	BOLT M5X10
62	0H9761	1	COVER, DUST
63	0J86620104	1	PLATE, GAURD
64	0J7921	1	ROV
65	0H9005	1	FUEL GAUGE 130LG
66	0J0974	1	VALVE FUEL SHUTOFF

©2014 Generac Power Systems, Inc. All rights reserved.
Specifications are subject to change without notice
No reproduction allowed in any form without prior written consent from Generac Power Systems, Inc.